

ADI™ CABLE RAILING FOR METAL



AS&D™ Aluminum Railing
and Cable System

pg 120 - 131

NEW PRODUCT LINE

Solutions™ Aluminum Railing
for Cable

pg 132 - 133

ACTUAL FREIGHT CHARGES WILL BE APPLIED TO ALL AS&D™ RAIL ORDERS

AS&D™ Railing System Overview

For the discriminating homeowner, a contemporary, esthetically pleasing and low maintenance aluminum railing system with stainless steel cable railing. Designed and engineered for use with Ultra-tec® cable. Has nationwide code approval. Features include a 10 year warranty.

Installers appreciate a short learning curve and substantial installation time savings. Easily cut and drilled using carbide tooling for job site adjustments. Cable kits are field trim-able to proper length, and install and tension quickly. A complete system engineered and designed to work together cohesively with Ultra-tec® cable.

Surface Mount

Over the Post (OTP) System

- 2 -3/8" diameter pre-drilled posts for cable with attached bases
- Cable spacing 3-3/16" on center
- Rail heights of 36" and 42"
- Recommended post spacing at 50" on center eliminates cable braces
- Level and stair applications
- Top rail profiles in 8' lengths – easily spliced or cut to any length
- Available in low maintenance popular finishes and stocked in Anodized and Black Baked Enamel



Fascia Mount

Over the Post (OTP) System

- 2 -3/8" diameter pre-drilled and undrilled posts for cable
- Sturdy fascia mount brackets
- Cable spacing 3-3/16" on center
- Rail heights of 36" and 42"
- Recommended post spacing at 50" on center eliminates cable braces
- Level and stair applications
- Top rail profiles in 8' lengths – easily spliced or cut to any length
- Available in low maintenance popular finishes and stocked in Anodized and Black Baked Enamel



AS&D™ - Aluminum Rail System for Cable Railing



Cable Railing Kits for Aluminum Rail



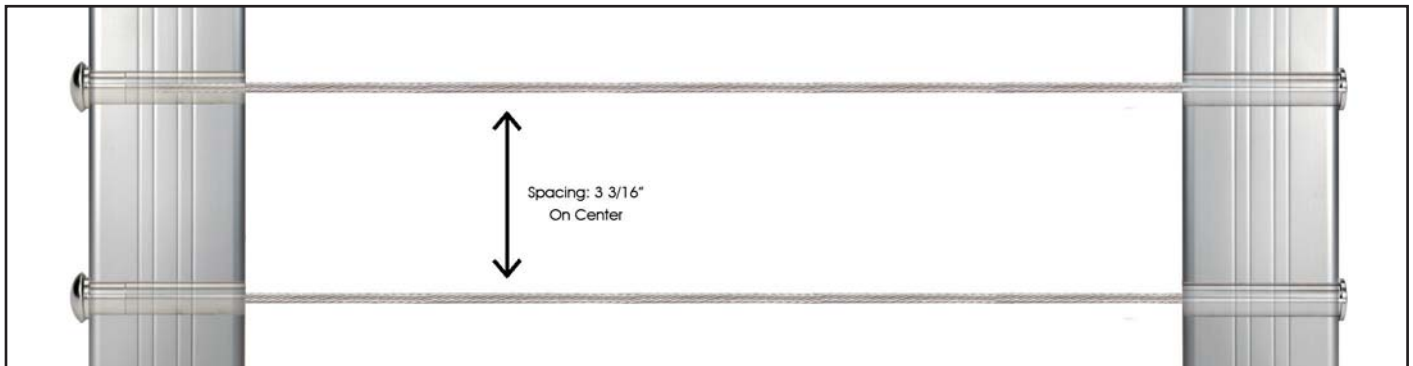
Outside of Post to Outside of Post Rail Kit - Aluminum Rail System for 2-3/8" Posts

Sold in kits.

Cable railing kit, made in USA from 1/8" high quality 316 grade stainless steel includes 1 strand of cable w/swage, applicable washers, Invisiware® receiver, Pull-Lock™ end fitting and end cap. Minimum of 3" clearance between end post and structure is required.

- Item #: 22405 - 5' Cable Kit
- Item #: 22410 - 10' Cable Kit
- Item #: 22415 - 15' Cable Kit
- Item #: 22420 - 20' Cable Kit
- Item #: 22425 - 25' Cable Kit
- Item #: 22430 - 30' Cable Kit
- Item #: 22440 - 40' Cable Kit
- Item #: 22450 - 50' Cable Kit

Cable Kits Over 50' - Contact Customer Service



ACTUAL FREIGHT CHARGES WILL BE APPLIED TO ALL AS&D™ RAIL ORDERS

Top Rail



Available in:

Black

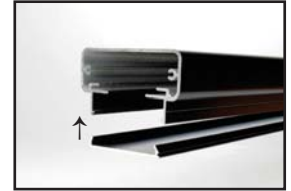
Anodized

Series 200 Top Rail

Sold in any quantity.

3-1/2" x 1-7/8" x 8' Series 200 aluminum top rail. Join multiple rails together with splices to achieve any length required. Field trimmable with carbide blade. Includes bottom finishing plate for clean look. End plate sold separately.

Item #: ASTR200ANO4KIT - 46" Length, Anodized
Item #: ASTR200BLK4KIT - 46" Length, Black
Item #: ASTR200ANO8KIT - 8' Length, Anodized
Item #: ASTR200BLK8KIT - 8' Length, Black



Available in:

Woodgrain

Series 200 Top Rail - Woodgrain

Sold in any quantity.

3-1/2" x 1-7/8" x 8' Series 200 aluminum top rail with powder coated woodgrain finish. Offers the look of IPE without the maintenance. Join multiple rails together with splices to achieve any length required. Field trimmable with carbide blade. Includes bottom finishing plate for clean look. End plate sold separately.

Item #: ASTR200WAL8KIT - 8' Length, Walnut



Available in:

Black

Anodized

Woodgrain

Series 200 Top Rail End Plate

Sold in any quantity.

Aluminum end plate required to cap series 200 top rail ends for a finished look. Includes 2 stainless steel screws.

Item #: ASEP200ANO - Anodized
Item #: ASEP200BLK - Black
Item #: ASEP200WAL - Woodgrain

Extended End Plate:

Item #: ASEXP200ANO - Anodized
Item #: ASEXP200BLK - Black



Available in:

Black

Anodized

Series 400 Top Rail for Wood Cap Rail

Sold in any quantity.

Series 400 aluminum rail cap for attaching wood/composite top rail. Field trimmable with carbide blade. Includes bottom finishing plate.

Item #: ASTR400ANO4KIT - 46" Length, Anodized
Item #: ASTR400BLK4KIT - 46" Length, Black
Item #: ASTR400ANO8KIT - 8' Length, Anodized
Item #: ASTR400BLK8KIT - 8' Length, Black



ACTUAL FREIGHT CHARGES WILL BE APPLIED TO ALL AS&D™ RAIL ORDERS

Rail Splices



Available in:
 Aluminum

Straight Splice

Sold in any quantity

9" long splice joins straight sections of series 200 top rail to make any length run. Installs with stainless steel #10 x 3/4" self drilling screws. (Not included)

Item #: ASSPL200 - Straight Splice



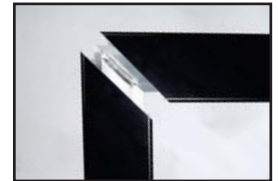
Available in:
 Aluminum

90 Degree Splice

Sold in any quantity.

Splices top rails to make a 90 degree angle for series 200 top rail. Installs with stainless steel #10 x 3/4" self drilling screws. (Not included)

Item #: ASSPL20090 - 90 Degree Splice



Available in:
 Aluminum

135 Degree Splice

Sold in any quantity.

Splices top rails to make a 135 degree angle for series 200 top rail. Installs with stainless steel #10 x 3/4" self drilling screws. (Not included)

Item #: ASSPL200135 - 135 Degree Splice



Available in:
 Aluminum

Notched Splice for Stairs

Sold in any quantity.

For continuous level to stair transition. Bends to accommodate any angle from 0° - 38°. Requires miter cutting of top rail. Installs with stainless steel #10 x 3/4" self drilling screws. (Not included)

Item #: ASSPLST - Notched Splice



ACTUAL FREIGHT CHARGES WILL BE APPLIED TO ALL AS&D™ RAIL ORDERS

Black Posts for Aluminum Railing and Cable System



Available in:
Black

Surface Mount Post - Black

Sold in any quantity.

2-3/8" Square surface mount post with 5" base plate. Base plate holes for lags are 3/8". Pre-drilled post is drilled at 3-3/16" on center spacing. Engineered to meet code with posts at 50" on center spacing. (Log bolts and caps for mounting base plate sold separately)

End Post - Pre-Drilled for Cable

Item #: ASCEP200BLK35 - 36" Rail Height
Item #: ASCEP200BLK41 - 42" Rail Height

Intermediate Post - Pre-Drilled for Cable

Item #: ASCIP200BLK35 - 36" Rail Height
Item #: ASCIP200BLK41 - 42" Rail Height



Available in:
Black

Fascia Mount Post - Black

Sold in any quantity.

2-3/8" Square fascia mount post for cable system. Pre-drilled post is drilled at 3-3/16" on center spacing. Engineered to meet code with posts at 50" on center spacing. (Fascia brackets sold separately)

End Post - Pre-Drilled for Cable

Item #: ASFMCEP200BLK46 - 46" Post for 36" Rail Height
Item #: ASFMCEP200BLK52 - 52" Post for 42" Rail Height

Intermediate Post - Pre-Drilled for Cable

Item #: ASFMCIP200BLK46 - 46" Post for 36" Rail Height
Item #: ASFMCIP200BLK52 - 52" Post for 42" Rail Height

Undrilled Post for Stair Applications

Item #: ASFMP200BLK52 - 52" Post for 42" Rail Height

Undrilled Post Requires Additional Base Plate for Converting to Surface Mount

Item #: ASBPBLKKIT - Base Plate, Black

ACTUAL FREIGHT CHARGES WILL BE APPLIED TO ALL AS&D™ RAIL ORDERS

Anodized Posts for Aluminum Railing and Cable System



Available in:

Anodized

Surface Mount Post - Anodized

Sold in any quantity.

2-3/8" Square surface mount post with 5" base plate. Base plate holes for lags are 3/8". Pre-drilled post is drilled at 3-3/16" on center spacing. Engineered to meet code with posts at 50" on center spacing. (Lag bolts and caps for mounting base plate sold separately)

End Post - Pre-Drilled for Cable

Item #: ASCEP200ANO35 - 36" Rail Height
Item #: ASCEP200ANO41 - 42" Rail Height

Intermediate Post - Pre-Drilled for Cable

Item #: ASCIP200ANO35 - 36" Rail Height
Item #: ASCIP200ANO41 - 42" Rail Height



Available in:

Anodized

Fascia Mount Post - Anodized

Sold in any quantity.

2-3/8" Square fascia mount post for cable system. Pre-drilled post is drilled at 3-3/16" on center spacing. Engineered to meet code with posts at 50" on center spacing. (Fascia brackets sold separately)

End Post - Pre-Drilled for Cable

Item #: ASFMCEP200ANO46 - 46" Post for 36" Rail Height
Item #: ASFMCEP200ANO52 - 52" Post for 42" Rail Height

Intermediate Post - Pre-Drilled for Cable

Item #: ASFMCIP200ANO46 - 46" Post for 36" Rail Height
Item #: ASFMCIP200ANO52 - 52" Post for 42" Rail Height

Undrilled Post for Stair Applications

Item #: ASFMP200ANO52 - 52" Post for 42" Rail Height

Undrilled Post Requires Additional Base Plate for Converting to Surface Mount

Item #: ASBPANOKIT - Base Plate, Anodized

ACTUAL FREIGHT CHARGES WILL BE APPLIED TO ALL AS&D™ RAIL ORDERS

AS&D™ Railing System Stair Application Options

Due to many variables in stair applications stair posts are undrilled to allow custom drill hole placement for cables. Template for hole spacing is available. All stair posts are designated as undrilled fascia posts and require the addition of a base plate or fascia bracket for mounting.

Series 200 Top Rail Over the Post (OTP) System

Pros:

- Profile matches level rail system
- Can be a continuous run from level to bottom of stairs
- Can be spliced mid span with splice plate

Cons:

- Requires skill in cutting and fitting rail to posts
- Post tops require cutting to proper angle
- Does not qualify as continuous graspable handrail and requires addition of a secondary hand rail system if needed.



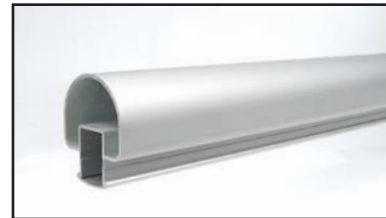
Series 100 Top Rail Over the Post (OTP) System

Pros:

- Qualifies as continuous graspable handrail not requiring a secondary handrail system.
- Less skill required to install
- Does not require a splice plate. Splices placed over the post.

Cons:

- Profile does not match level rail.
- Start at top of stairs is not a smooth transition from level.



ACTUAL FREIGHT CHARGES WILL BE APPLIED TO ALL AS&D™ RAIL ORDERS

Optional Series 100 Top Rail for Stair Applications



Available in:

Black

Anodized

Series 100 Top Rail for Stairs

Sold in any quantity.

2" x 1-5/8" x 8' Series 100 aluminum top rail. Qualifies as continuous graspable handrail when used with intermediate post fitting. Field trimmable with carbide blade. Includes bottom finishing plate for clean look. End plate sold separately.

Item #: ASTR100ANO4KIT - 46" Length, Anodized
Item #: ASTR100ANO8KIT - 8' Length, Anodized
Item #: ASTR100BLK4KIT - 46" Length, Black
Item #: ASTR100BLK8KIT - 8' Length, Black



Available in:

Black

Anodized

Series 100 Top Rail End Plate

Sold in any quantity.

Aluminum end plate required to cap series 100 top rail ends for a finished look.

Item #: ASEP100ANO - Anodized
Item #: ASEP100BLK - Black



Available in:

Black

Anodized

Intermediate Post Fitting for 100 Series Top Rail

Sold in any quantity.

Used on intermediate stair posts for over the post mounting style of 100 series top rail. Fitting attaches to the top of post and allows for top rail to be installed at any angle.

Item #: ASIPFSETANO - Anodized
Item #: ASIPFSETBLK - Black



Available in:

Aluminum

Rail Connector Block

Sold in any quantity.

Used to terminate series 100 top rail into post.

Item #: ASRCB1 - 1" Connector Block - Level
Item #: ASRCB12 - 12" Connector Block - Stair



ACTUAL FREIGHT CHARGES WILL BE APPLIED TO ALL AS&D™ RAIL ORDERS

Undrilled Post for Stairs



Available in:

Black

Anodized

Undrilled Post for Stair Applications

Sold in any quantity.

52-3/8" x 2-3/8" Square undrilled post for cable system. Due to many variables in stair applications stair posts are undrilled to allow custom drill hole placement for cables. Determine bottom hole location, then use drilling template for remaining holes.

Undrilled Post for Stair Applications

Item #: ASFMP200ANO52 - 52" Anodized Post

Item #: ASFMP200BLK52 - 52" Black Post

Requires Base Plate or Fascia Bracket for Mounting

Drilling Template:

Use drilling template to mark 3-3/16" cable spacing on undrilled post for stair or custom applications.

Item # CABLETEMP



Mounting Brackets and Hardware



Available in:

Black

Anodized

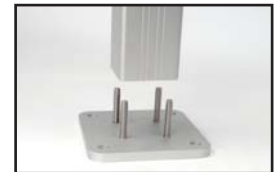
Base Plate with Screws

Sold in any quantity.

5" x 5" x 3/8" Aluminum base plate used for custom post applications. Base plate holes for lags are 3/8". Can be used to convert fascia posts to surface mount post for stair applications. Includes 4 ea. 5/16" x 2" stainless steel screws - Use T-25 torx head for installation.

Item #: ASBPANOKIT - Anodized

Item #: ASBPBLKKIT - Black



Available in:

Black

Anodized

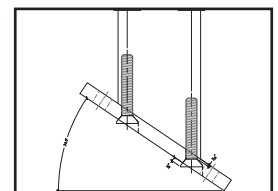
Angle / Knee Wall Base Plate with Screws

Sold in any quantity.

5" x 5" x 3/8" Slotted, adjustable aluminum base plate used for knee wall applications with an angle of 32° - 38°. Base plate holes for lags are 3/8". Includes 4 ea. stainless steel bolts. Use T-25 torx head 5/16" x 2" screws. Requires grinding of bolt head for flush bottom.

Item #: *ASBPKWANOKIT - Anodized

Item #: *ASBPKWBLKKIT - Black



ACTUAL FREIGHT CHARGES WILL BE APPLIED TO ALL AS&D™ RAIL ORDERS



Available in:
 Black
 Anodized

6" Fascia Bracket

Sold in any quantity.

For mounting 2-3/8" post to deck fascia. Bracket offsets post 1" out from fascia. Mounting hardware is not included. Use 4 fascia screws to secure post in bracket and 4 lags or carriage bolts to secure bracket to fascia.

Item # **ASFMIPB200ANO6** - Anodized
 Item # **ASFMIPB200BLK6** - Black
 Item # **ASSSFS** - 1" Fascia Screw



Available in:
 Black
 Anodized

Fascia Bracket - Outside Corner

Sold in any quantity.

For mounting 2-3/8" posts to deck fascia. This bracket is required to maintain 4" spacing on outside corners. Bracket offsets post 1" out from fascia. Mounting hardware is not included. Use 4 fascia screws to secure post in bracket and 4 lags or carriage bolts to secure bracket to fascia.

Item #: **ASFMOCB200ANO6** - Anodized
 Item #: **ASFMOCB200BLK6** - Black
 Item # **ASSSFS** - 1" Fascia Screw



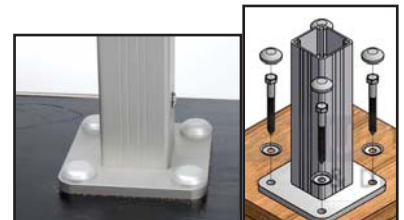
Available in:
 Black
 Anodized

Bolt Cap w/ Stainless Steel Cup Washer

Sold in any quantity.

Covers lag screw heads for a clean, finished look.

Item #: **ASBOLTCAPANOKIT** - Anodized
 Item #: **ASBOLTCAPBLKKIT** - Black



Available in:
 Stainless Steel

3-1/2" Stainless Steel Lag Screw for Post Base

Sold in any quantity.

3-1/2" x 3/8" Lag used to attach post base to deck or for mounting fascia bracket.

Item #: **ASSCREWLAG4**

ACTUAL FREIGHT CHARGES WILL BE APPLIED TO ALL AS&D™ RAIL ORDERS



Available in:

- Stainless Steel

Fascia Bracket Screws

Sold in any quantity

#14 x 1" Hex head stainless steel fascia bracket screw. Use for securing post to fascia bracket. Requires 4 per bracket.

Item #: ASSSFS - Fascia Screw



Available in:

- Black
- Anodized

Fascia Mount Post Cap

Sold in any quantity.

Use to finish bottom of fascia mount post.

Item #: ASPCANO - Anodized

Item #: ASPCBLK - Black

Accessories



Available in:

- Gray

Drilling Template For 2-3/8" Post

Sold in any quantity.

Used to mark 3-3/16" cable spacing on undrilled post for stair or custom applications. Can also be used to mark 3-1/8" on center for 3/4" square cable brace.

Item # CABLETEMP - 40" PVC Drilling Template



Available in:

- Black
- Stainless Steel

Color Matched Screws

Sold in 100 Pack.

#10 - 3/4" Screw attaches top rail to posts, and also used for splices. Use #2 square drive.

Item #: ASSCREWSSW805 - Anodized

Item #: ASSCREWBLKW805 - Black

ACTUAL FREIGHT CHARGES WILL BE APPLIED TO ALL AS&D™ RAIL ORDERS



Available in:
Black

Touch-Up Paint

Sold in any quantity.

Touch up paint available to cover up scratches and cuts from installation.

Item # 660368 - Black