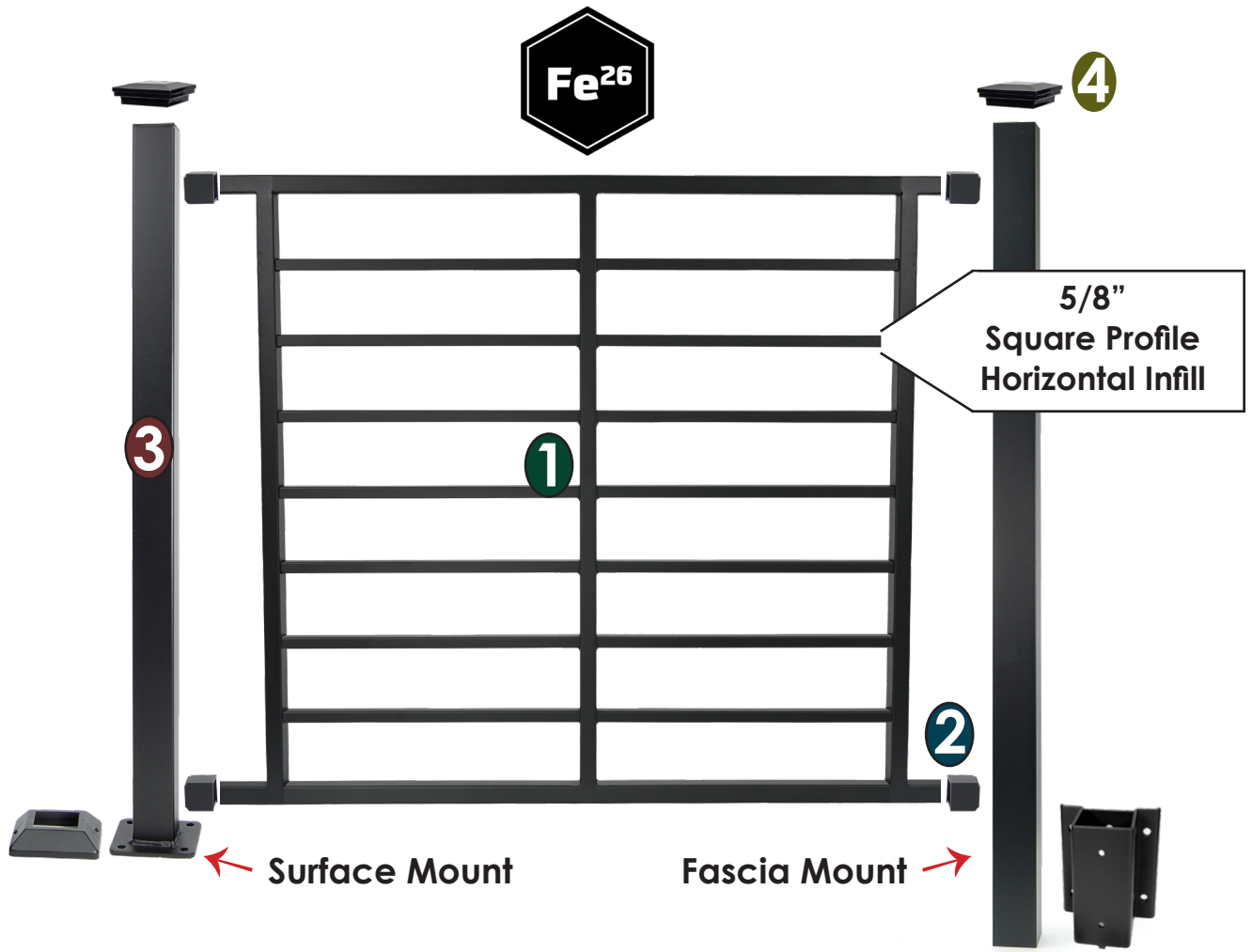


Fortress® AXIS Horizontal Rail



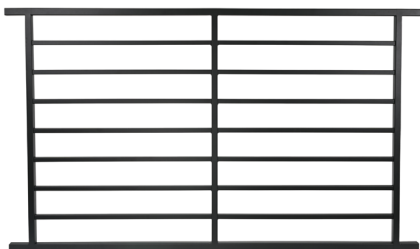
Use the steps below for the following pages to complete your rail system

STEP 1 Choose Rail Panel

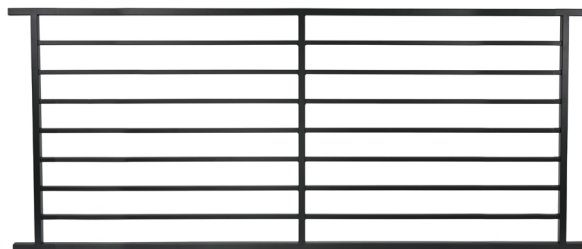
STEP 3 Choose Post
Surface or Fascia Mount

STEP 2 Choose Brackets (4 Pack)

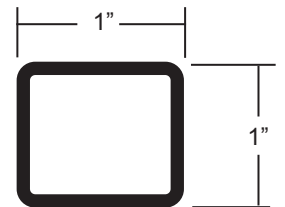
STEP 4 Select a Post Cap



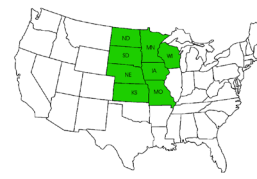
6' Rails



8' Rails



Top Rail Profile

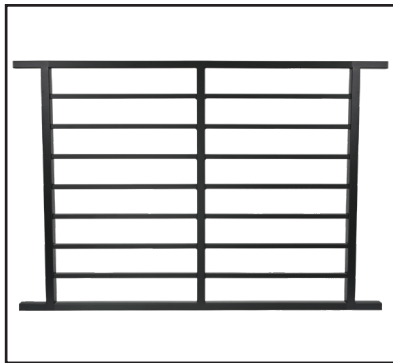


ACTUAL FREIGHT CHARGES APPLY TO FORTRESS® RAIL ORDERS



Fortress® Horizontal Rail - Black Sand

Fortress® AXIS Horizontal Railing Panel - Level



Top / bottom rail measure
1" x 1"

5/8" Square Infill

Available in:
Black Sand

Fe²⁶ Horizontal Railing Panel

Sold in any quantity.

Fortress Fe²⁶ horizontal panel for 36" or 42" rail heights. Top/bottom rail measure 1" x 1" with 5/8" square rod infill. Brackets sold separately, see next page.

6' - Fe²⁶ Horizontal Railing Panel

36" Rail Height (34" x 69.5" Panel)

42" Rail Height (40" x 69.5" Panel)

Item # 53834708 - Black Sand (Txt)

Item # **53840708** - Black Sand (Txt)

8' - Fe²⁶ Horizontal Railing Panel

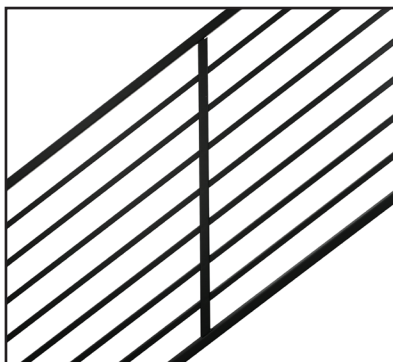
36" Rail Height (34" x 93.5" Panel)

42" Rail Height (40" x 93.5" Panel)

Item # 53834948 - Black Sand (Txt)

Item # **53840948** - Black Sand (Txt)

Fortress® AXIS Horizontal Panel - Adjustable Stair



Top / bottom rail measure
1" x 1"

5/8" Square Infill

Adjustable from 30° - 40°

Available in:
Black Sand

Fe²⁶ Horizontal Adjustable Stair Panel

Sold in any quantity.

Fortress Fe²⁶ horizontal panel for 36" or 42" rail heights. Top/bottom rail measure 1" x 1" with 5/8" square rod infill. Panel adjustable: 30° - 40°. Brackets sold separately, see next page.

6' - Fe²⁶ Horizontal Railing Stair Panel

36" Rail Height (34" x 69.5" Panel)

42" Rail Height (40" x 69.5" Panel)

Item # 53034748 - Black Sand (Txt)

Item # **53040748** - Black Sand (Txt)

8' - Fe²⁶ Horizontal Railing Stair Panel

36" Rail Height (34" x 93.5" Panel)

42" Rail Height (40" x 93.5" Panel)

Item # 53034948 - Black Sand (Txt)

Item # **53040948** - Black Sand (Txt)



ACTUAL FREIGHT CHARGES APPLY TO FORTRESS® RAIL ORDERS



Available in:
Black Sand

1" Cap Rail Clip

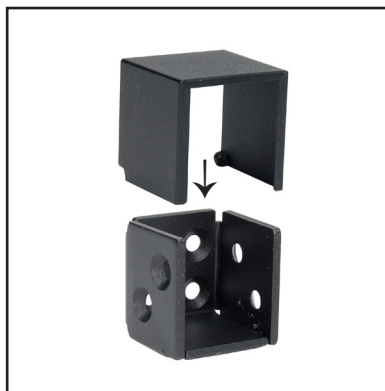
Sold in bags of 4.

Clips allow for a clean smooth attachment of wood or composite rail to the top of Fortress AXIS horizontal panels. Clips are recommended every 2' along the rail. Includes screws.

Item # 53504058 - Black Sand (Textured)



Fortress® Rail Brackets



Available in:
Black Sand

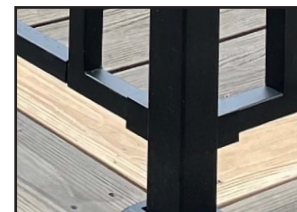
Fe²⁶ 1" Universal Bracket - Level

Sold in Bags of 4.

Used for straight installation of Fortress AXIS horizontal panels to post. Includes screws for wood and metal applications.

1" Brackets

Item # 53504008 - Black Sand (Textured)



Available in:
Black Sand

Fe²⁶ 1" Universal Angle Adapter Bracket for Side to Side

Sold in Bags of 4.

Angle Adapters used to convert 1" UB Bracket for side to side applications. Adjustable up to a 45 degree angle. *Not to be used for stair with AXIS railing. Purchase 1" UB Bracket separately.* Includes screws for wood and metal applications.

1" Angle Adapter

Item # 53504018 - Black Sand (Textured)



Available in:
Black Sand

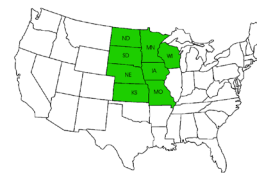
Fe²⁶ Simplified Stair Bracket

Sold in Bags of 4.

Simplified stair brackets **MUST** be used for horizontal rail panels on a stair application. Brackets attach stair railing to post. Adjustable up to 40 degree angle. Includes screws for wood and metal applications.

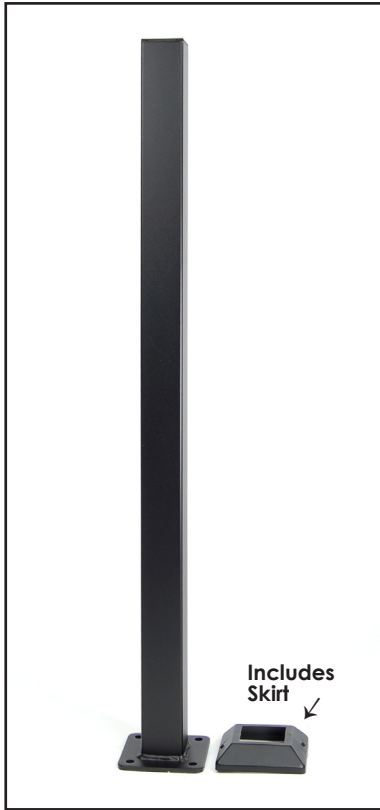
1" Stair Brackets

Item # 53504068 - Black Sand (Textured)



ACTUAL FREIGHT CHARGES APPLY TO FORTRESS® RAIL ORDERS

Fortress® Posts, Caps & Skirts



Available in:
Black Sand

Fe²⁶ - 2" Iron Post with 2 pc. Skirt

Sold in any quantity.

2" x 39-1/2" Iron post with 4" flange and skirt used to install panels at a 36" rail height. Flange holes are 1/2" for fasteners. **Includes skirt for base.**

Item # 53302418 - Black Sand (Textured)

2" x 45-1/2" Iron post with 4" flange and skirt used to install panels at a 42" rail height. Flange holes are 1/2" for fasteners. **Includes skirt for base.**

Item # 53302478 - Black Sand (Textured)

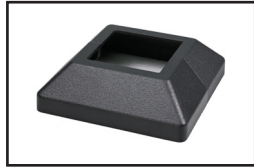


FortressAccents™ 2" Post Cap

Sold in any quantity.

Accents flat die cast aluminum post cap for 2" post.

Item # 52500028 - Black Sand (Textured)

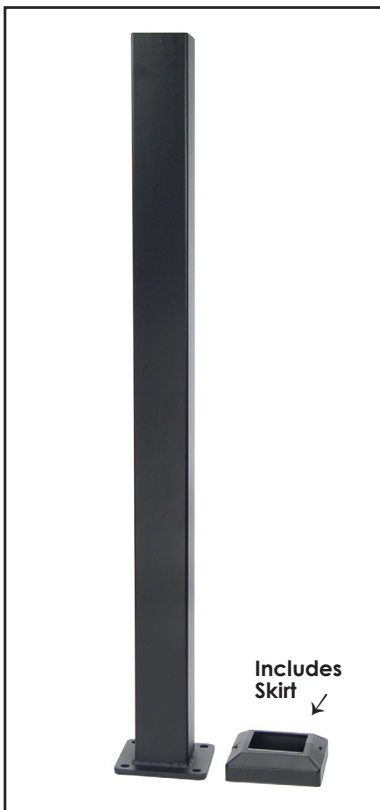
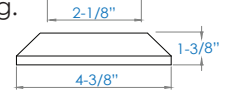


2" Post Skirt 2 pc. - Replacement

Sold in any quantity.

Fe²⁶ - 4-3/8" Post skirt included w/ post. **Also Sold separately.** Measures 4-3/8" x 1-3/8" with 2-1/8" opening.

Item # 53504108 - Black Sand (Textured)



Available in:
Black Sand

Fe²⁶ - 3" Iron Post with 2 pc. Skirt

Sold in any quantity.

3" x 39-1/2" Iron post with 5-1/4" flange and skirt used to install panels at a 36" rail height. Flange holes are 1/2" for fasteners. **Includes skirt for base.**

Item # 53303418 - Black Sand (Textured)

3" x 45-1/2" Iron post with 5-1/4" flange and skirt used to install panels at a 42" rail height. Flange holes are 1/2" for fasteners. **Includes skirt for base.**

Item # 53303478 - Black Sand (Textured)

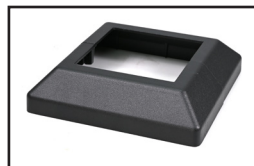


FortressAccents™ 3" Post Cap

Sold in any quantity.

Accents flat die cast aluminum post cap for 3" post.

Item # 52500038 - Black Sand (Textured)

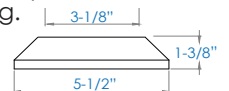


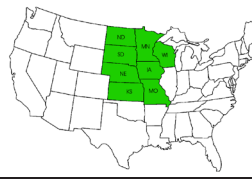
3" Post Skirt 2 pc. - Replacement

Sold in any quantity.

Post base cover included. Also sold separately. Measures 5-1/2" x 1-3/8" with 3-1/8" opening.

Item # 53505108 - Black Sand (Textured)





ACTUAL FREIGHT CHARGES APPLY TO FORTRESS® RAIL ORDERS

Fortress® Fe²⁶ Fascia Mount Posts



Available in:
Black Sand

Fe²⁶ - 2" Iron Fascia Mount Post

Sold in any quantity.

2" x 49" Iron post used to install panels at a 36" rail height for a fascia mount application. **Requires fascia mount brackets, see next page.**

2" x 49" Post

Item # **53349158** - Black Sand (Textured)

2" x 55" Iron post used to install panels at a 42" rail height for a fascia mount application. **Requires fascia mount brackets, see next page.**

2" x 55" Post

Item # **53355158** - Black Sand (Textured)



FortressAccents 2" Post Cap

Sold in any quantity.

Accents flat die cast aluminum post cap for 2" post.

Item # **52500028** - Black Sand (Textured)



Available in:
Black Sand

Fe²⁶ - 3" Iron Fascia Mount Post

Sold in any quantity.

3" x 49" Iron post used to install panels at a 36" rail height for a fascia mount application. **Requires fascia mount brackets, see next page.**

3" x 49" Post

Item # **53349168** - Black Sand (Textured)

2" x 55" Iron post used to install panels at a 42" rail height for a fascia mount application. **Requires fascia mount brackets, see next page.**

3" x 55" Post

Item # **53355168** - Black Sand (Textured)



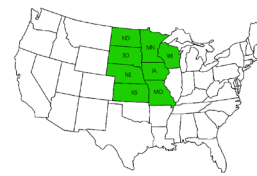
FortressAccents 3" Post Cap

Sold in any quantity.

Accents flat die cast aluminum post cap for 3" post.

Item # **52500038** - Black Sand (Textured)

Fe²⁶ AXIS Horizontal Panels ■ Fortress®



ACTUAL FREIGHT CHARGES APPLY TO FORTRESS® RAIL ORDERS

Fortress® Fe²⁶ Fascia Brackets



Available in:
Black Sand

Fe²⁶ - Fascia Mount Bracket

Sold in any quantity.

Fascia mount bracket for 2" and 3" posts. Bracket offsets post 1/4" out from fascia. Includes 4 self-drilling screws & 4 hex head bolt covers. Mounting hardware not included.

2" Fascia Bracket

Item # **53502008** - Black Sand (Textured)

3" Fascia Bracket

Item # **53503008** - Black Sand (Textured)

Replacement Hex Head Bolt Cover (4 Pack)

Item # **53503118** - Black Sand (Textured)



Available in:
Black Sand

Fe²⁶ - Outside Corner Fascia Mount Bracket

Sold in any quantity.

Outside Corner fascia mount bracket for 2" and 3" posts. Bracket offsets post 1/4" out from fascia. Includes 4 self-drilling screws & 8 hex head bolt covers. Mounting hardware not included.

2" Outside Corner Fascia Bracket

Item # **50502018** - Black Sand (Textured)

3" Outside Corner Fascia Bracket

Item # **50503018** - Black Sand (Textured)

Replacement Hex Head Bolt Cover (4 Pack)

Item # **53503118** - Black Sand (Textured)



Available in:
Black Sand

Fe²⁶ - Inside Corner Fascia Mount Bracket

Sold in any quantity.

Inside Corner fascia mount bracket for 2" and 3" posts. Bracket offsets post 1/4" out from fascia. Includes 4 self-drilling screws & 4 hex head bolt covers. Mounting hardware not included.

2" Inside Corner Fascia Bracket

Item # **53502028** - Black Sand (Textured)

3" Inside Corner Fascia Bracket

Item # **53503028** - Black Sand (Textured)

Replacement Hex Head Bolt Cover (4 Pack)

Item # **53503118** - Black Sand (Textured)





ACTUAL FREIGHT CHARGES APPLY TO FORTRESS® RAIL ORDERS

Post Caps & Accessories



Available in:
Black Sand

FortressAccents™ Post Cap w/ Optional Light Kit

Sold in any quantity.

Accents flat die cast aluminum post cap for 2" and 3" posts. Light kit draws **2 watts**. Light color - 2600K. Includes wire nuts and 60" lead wire. **Must purchase LED cap light kit along with cap.**

2" Post Cap

Item # 52500028 - Black Sand (Txt)

Light Kit

Item # 52500000P - LED Light Kit



FortressAccents Plug-N-Play

3" Post Cap

Item # 52500038 - Black Sand (Txt)

Light Kit

Item # 52500000P - LED Light Kit



Available in:
Absolute Black

DekPro™ EFFEX 3" Post Caps

Sold in any quantity.

Optional DekPro aluminum post cap with textured finish. Available in pyramid or flat top styles with both non-lighted and lighted options. LED lights features Quick Connect wiring system for easy installation.

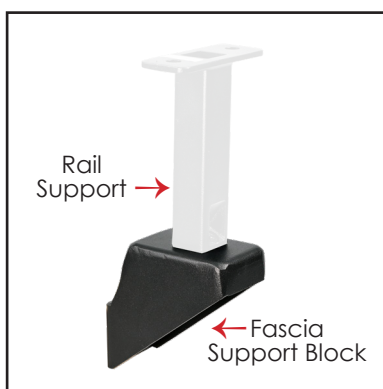
Item # DPCC3FABT - Flat Top
Item # DPCC3PABT - Pyramid

Item # DPCC3FDLABT - Flat Top Down Light
Item # DPCC3PDLABT - Pyramid Down Light

Item # DPCC3FBLABT - Flat Top Glow Ring
Item # DPCC3PBLABT - Pyramid Glow Ring



DekPro Quick Connect System



Available in:
Black Sand

Fe²⁶ Fascia Mount Rail Support Block

Sold in any quantity. 25 / case

Support block provides mid-span support for fascia mounted Fe26 railing. Includes screws.

Fascia Support Block:

Item # 53503038 - Black Sand (Textured)

3-3/4" Rail Support

Item # 55537508 - Black Sand (Textured)



Available in:
Black Sand

Fe²⁶ Touch Up Paint

Sold in any quantity.

Available in two convenient sizes.

Spray Can (6oz)

Item # 660378 - Black Sand

Paint Pen:

Item # 660368 - Black Sand